

[SMART]:LIVING

Smart Living Plug: APP control plug Timing Switch Smart Home Wi-Fi Socket with USB And Without USB

Wi-Fi USB Plug-in Point

Colour: White
Size: 120*50*70mm
Input: 100 ~ 240VAC (Over load protection)
Output: 100 ~ 240VAC 50/60Hz, USB: 5V / 2.1A, 2 ports

Wireless Standard: 802.11 b/g/n, 2.4GHz (only)

Security Mechanism: WPA-PSK / WPA2-PSK

Warranty: 3years - Type: Wi-Fi Socket

Rated Voltage: 110-240V- 50-60Hz

Application: Residential switch

Certificate: CE,ROHS,FCC,SAA

Application: Smart Home Automation System

Support System: Android \ IOS APP Remote Control

Multi-Functions 1:Timer function - Multi-Functions 2: Grouping

Multi-Functions 3: Status real-time feedback - Multi-Functions 4: Device sharing



WiFi dual USB socket



- Multi user sharing
- App remote control
- Timing, countdown
- Support voice control
- USB independent control
- Power off memory function
- One button linkage function



What is wifi plug?

Users can instantly convert any plug into a smart plug with a convenient timer function that works on user's smartphone. You can turn on/off any connected device either on the APP or by pressing the manual control knob of the WIFI plug. It makes a perfect to control lighting and other appliances.



Main Functions: Voice Control / Remote Control / Time Schedule / Barrie-free Compatibility / Energy Saving / Safety & Durability / No Hub Required / Simple Installation / Electricity Statistics.

WIFI Remote Control: Turn the plug on and off from anywhere on the earth.
App Support: Free IOS and Android Phone App (Smart Living).

MINI SMART SOCKET

Make Your Life Easier



- NO.1 WiFi remote control your devices
- NO.2 Timing/Countdown Schedule Function
- NO.3 Alexa Echo Voice Control
- NO.4 Charge Protection
- NO.5 Energy Saving

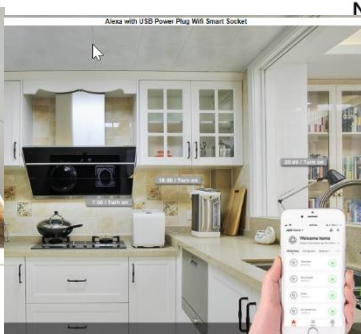
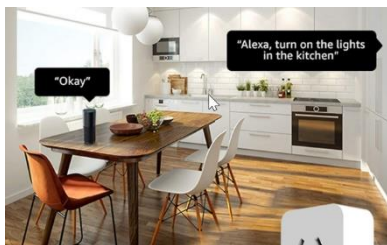
Remote your home appliances anywhere at anytime



Voice Control: Support with Alexa, Google Assistant/Home, and IFTTT, etc.
Synchronization Status: Real-time device status provided on the APP.
Timing Function: Set the reservation/countdown timer to turn on and off at the specified time.

Features:

- ⊕ Voice Control: smart plug works with Amazon Alexa and Google Assistant for voice control. Command Siri Shortcut* with Smart Living App Scenes on iOS.
- ⊕ Compact Design: Mini smart plug won't block the other outlet allowing two smart plugs working together and flawless.
- ⊕ Remote Control: This Wi-Fi smart plug allowing to turn electronics on and off from anywhere with any network with your smartphone by using the Smart Living app(Compatible with Android & iOS)
- ⊕ Timer & Schedule: Schedule the smart plug to switch on and off automatically at any time you wanted.
- ⊕ Create scene schedules to turn on/off your devices at special moment.
- ⊕ Smart Living plugs requires only secured 2.4GHz Wi-Fi network connection.
- ⊕ Support network status normal test
- ⊕ Support remote control plug switch
- ⊕ Support timer to switch on and off, countdown
- ⊕ Installation is easy, safe and fast under 2.4 GHZ WIFI
- ⊕ Mobile app remote control on and off;
- ⊕ Support Alexa, google home, IFTTT voice control
- ⊕ Support multiple mobile phone controls
- ⊕ Energy saving and environmental protection
- ⊕ Group control
- ⊕ Wi-Fi distance: 50 meters outdoors, indoors up to 30 meters (subject to structure)



No matter where you are, you can remote control the home appliance.



Voice / App Control

Compatible with Amazon Alexa and Google Assistant

Overview

Quick Details

Place of Origin: Fujian, China
 Brand Name: Smart Living
 Model Number: KYSSUS-WDL-031
 Max. Current: 10A
 Max. Voltage: 240V AC
 Mechanical Life: 100000
 product name: touch switch
 Keyword: smart home
 Rated operational voltage: 110Vac~240Vac
 Frequency: 50-60 Hz
 Function: Touch Panel Light Wall Switch
 Control Method: Wifi Remote Control
 Application: Smart Home System
 Panel Material: Tempered crystal glass
 Case Material: Temperature resistant and flame retardant PC
 Voice Control: Google Home Amazon Alexa



Packaging & Delivery

Packaging Details

1pcs into a white box or color gift box package
 60pcs into a carton box
 size: 430mm*265*380mm

2021 New Au NZ Wifi Light Switch Rs485 Modbus Touch Switch Smart Switch Led Smart Home Plug

This is an advanced Smart wall switch with the latest design. This switch supports touch control, voice control (Google assistant, amazon ALEXA), remote control of mobile phone APP and other smart control modes. This smart wall switch can completely replace the traditional wall switch, instantly take you into the modern smart life. This smart wall switch uses toughened glass touch panel and fire prevention and it is widely used in homes, offices, hotels, hospitals and other places. The smart wall switches comply with the European, US and other multinational standards.

Product Name	Smart WIFI Touch Wall Switch
Standard	US AU size
Color	White , Black and gold
Function	Mobile APP control
Max. Current	10A
Max. Voltage	110V-240V AC
Load Power	2400W max
Operating Frequency	50/60Hz
Material	Tempered glass panel
Shell material	Fire retardant PC
Working temperature	-20°C~+70°C
Life Time	more than 100,000 times
Warranty	2 Years



Smart wifi Touch Wall Switch:

This 1/2/3/4 Gang touch switch supports maximum power of 2400W that can work with most lights and other electric appliances. It can separately control 4 appliances at the same time.

APP Remote Control:

User can use a smartphone to remotely control turn on / off home electronics at anytime and anywhere via APP as long as the phone has WIFI network. It makes your home appliances smart in 1 second. Compatible with iOS and Android.

Premium Quality:

Made of flame-resistant ABS shell and toughened glass panel that ensures a good durability. Luxury and fashion design that can be well fit into most houses with different decorate style.

More Intelligent:

Work with Amazon Alexa / Google Home, user can control this WiFi switch via voice through Alexa / Google device to turn on/off the switch (support independently control), which makes the operation more convenient and more intelligent.

Strong Function:

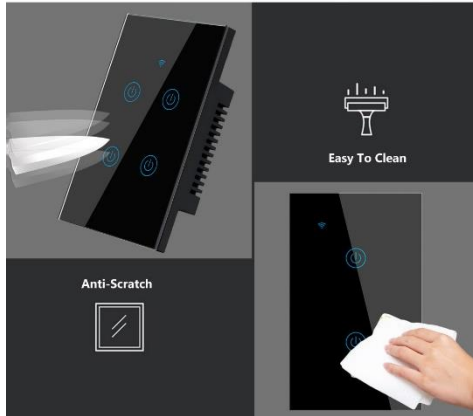
Support timer function that includes countdown, single and repeat timer, it can set Max.

[SMART]:LIVING

Product Overviews

HD Tempered Glass

Glass reinforced process, not afraid of sharp objects scratching



Switch parameter

Passed FCC, CE, ROHS certification

Operating Voltage	AC 110-240VAC 50/60Hz
WiFi Standard	IEEE 802.11 b/g/n
Support App	Taplo for Smart Life
Voice Control	Google Home Amazon Alexa
Load Power	600W/Gang
Max Current	10A

FLAME RETARDANT MATERIAL

NOT afraid of fire safe and secure



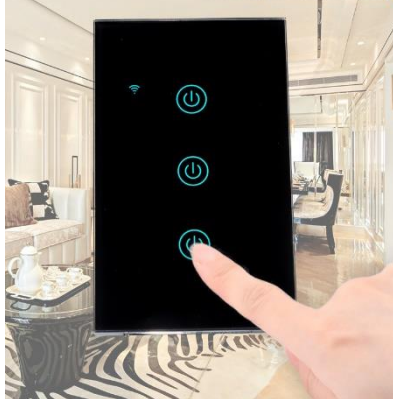
COUNTDOWN FUNCTION

You can have more time to do other things



TRANSPARENT TEXTURE

Artistic experience. Beautiful feeling



Family Sharing Control Fun

main account has the exclusive permissions,one click to share the permissions with the whole family,let the family enjoy the fun of smart life!



Wet Hands Can Touch

Highly Sensitive Touch Sensing



TIMING FUNCTION

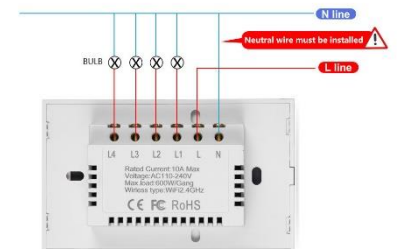
You can set the time to turn on the light and turn on the fans in the office



Timing Program

Fire wire connects "L" Terminal
Neutral wire connects "N" Terminal
Lighting wire connects "L1,L2, L3,L4" Terminal

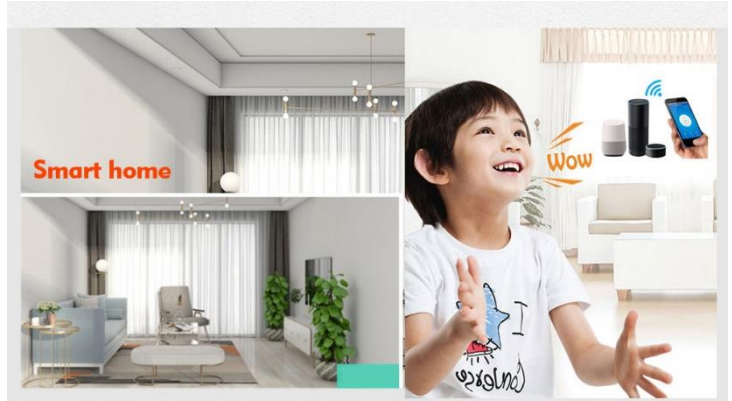
- 1 gang connects "L1" Terminal
- 2 gang connects "L1,L2" Terminal
- 3 gang connects "L1,L2,L3" Terminal
- 4 gang connects "L1,L2,L3,L4" Terminal



[SMART]:LIVING

Australia & New Zealand Smart Living Socket with APP Remote Control With Dual USB Ports

Model Number:PA8-AU
 Type: Electrical Plug
 Grounding: Standard Grounding
 Rated Voltage:100-240VAC
 Rated Current:10A
 Application: Residential / General-Purpose
 Voltage: 100-240V 50-60HZ
 Devices Support: Wi-Fi 2.4GHz network
 Application: Smart Home Automation System
 Support System: Android \ IOS APP Remote Control
 Multi-Functions 1: Timer function
 Multi-Functions 2: Grouping
 Multi-Functions 3: Status real-time feedback
 Multi-Functions 4: Device sharing
 Other Name: APP Remote Control Smart Wi-Fi Plug



Control from Anywhere

Turn on / off your lights, ceiling fans, and other electrical fixtures, wherever you are.



WiFi dual USB socket



- Multi user sharing
- App remote control
- Timing, countdown
- Support voice control
- USB independent control
- Power off memory function
- One button linkage function

Main Functions: Voice Control / Remote Control / Time Schedule / Barrie-free Compatibility / Energy Saving / Safety & Durability / No Hub Required / Electricity Statistics.

WIFI Remote Control: Turn the plug on and off from anywhere on Phone App (Smart Life). Real-time device status provided on the ,
 Timing Function: Set the reservation/countdown timer to turn on a

Model No.	PA8-AU (Australian New Zealand Plug)
Smart Multi-Control	Voice Control, App Control
Usage	COMPATIBLE WITH: Alexa, Google Assistant/Home, and IFTTT
App Name	Tuya / Smart life (Compatible with Android & iOS)
Functions	Voice Control / Remote Control / Time Schedule / Barrie-free Compatibility / Energy Saving / Safety & Durability / No Hub Required / Simple Installation.
Material	V0 fireproof ABS+PC
Color	White
Size	120*50*70mm
Input	100 ~ 240VAC (Over load protection)
Output	100 ~ 240VAC 50/60Hz, USB: 5V / 2.1A, 2 ports
Rated Current	Max 10A (220V) / 16A (110V)
Wireless Standard	802.11 b/g/n, 2.4GHz (only)
Security Mechanism	WPA-PSK / WPA2-PSK
Reset	Press the button for 6 seconds
Certificate	CE FCC ROHS SAA

